



A WORLD OF NEIGHBOURS

WE MAKE IT POSSIBLE!



A WORLD OF NEIGHBOURS



**WE ARE PRACTITIONERS WORKING ON THE FRONT LINES
OF **INTEGRATION** AND **ACCOMPANIMENT**, WITH AND FOR
PEOPLE ON THE MOVE IN EUROPE. SUPPORT THE INTERFAITH
AND CROSS SECTORAL PRACTITIONERS NETWORK
A WORLD OF NEIGHBOURS AND BUILD THE FUTURE
OF AN **INCLUSIVE EUROPE**.**

**MIGRATION IS ONE OF THE BIGGEST CHALLENGES
OF THE 21ST CENTURY:**

INVEST IN THE FEW, IMPACT THE MANY.

Copyright © 2023 A World Of Neighbours

The A World of Neighbours Network was initiated by:

Founded by Church of Sweden, in cooperation with Hebrew Immigrant Aid Society,
Lutheran World Federation and Islamic Relief Worldwide

A World of Neighbours Stichting
Cabralstraat 1, 1057 CD Amsterdam, The Netherlands
IBAN: NL94 BUNQ 2080 4814 36
BIC: BUNQNL2AXXX

WE ARE PRACTITIONERS

We live all over Europe and come from many parts of the world. Some of us have been refugees ourselves. Many of us have migration experience.

We are practitioners:

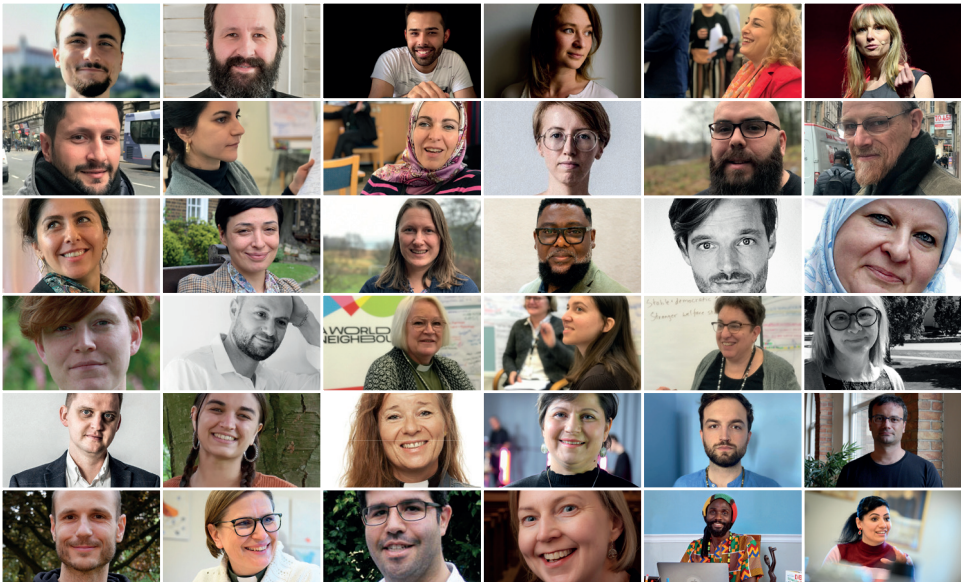
- Resilient, innovative and religiously and culturally literate.
- Well-connected, resourceful, cost effective and solution-oriented

On a daily basis, we uphold ethics, bridge cultural and faith gaps, do research, provide psychological, jurisdictional and practical support, at the borders and at home, and much more.

We are mostly understaffed, undervalued, overworked and under-sourced, but won't stop.



MEET SOME OF THE AWON PRACTITIONERS WORKING ACROSS EUROPE:

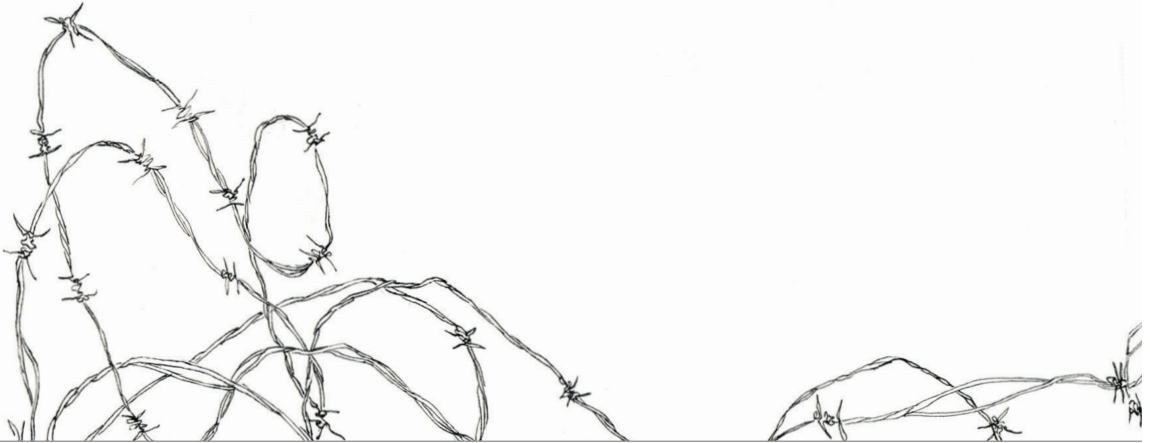


A VICIOUS CIRCLE OF MUTUAL ALIENATION ↘

People on the move and the European receiving communities are threatened by the current migration situation. Their basic security is at stake. The European response is walls, barbed wire fences and containment camps, leaving vulnerable people in appalling conditions, preventing fruitful interaction between local society and people on the move.

We have ended up in a vicious cycle of mutual alienation, fear and dehumanisation.

But we have a choice.



AWON PRACTITIONER

REBECCA LILLIAN

**RABBI AT PROGRESSIVE CONGREGATIONS SHIR
HATZAFON IN COPENHAGEN AND SUKKAT SHALOM
IN STOCKHOLM**

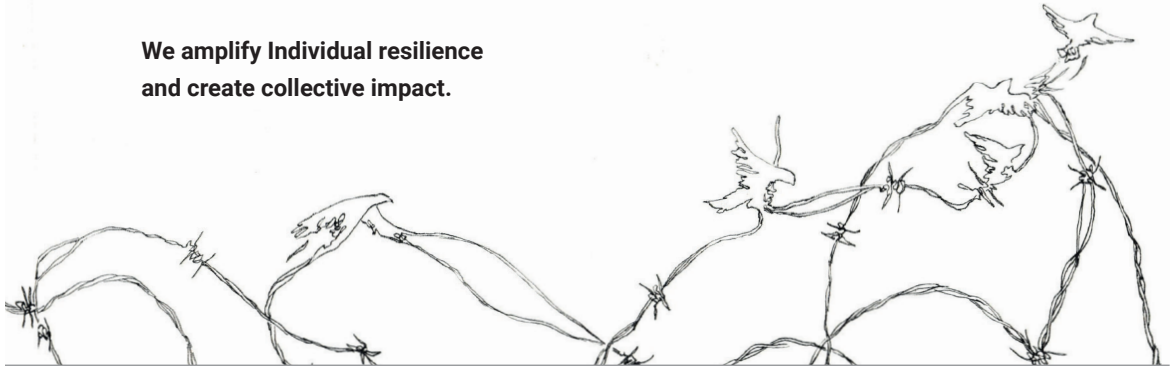
"I saw "quick activity, quick burnout" among people engaging in the 2015 refugee crisis. I think the AWoN network is especially appropriate for those who feel like I do: I want to be here, accompanying people on the move for the rest of my career, in different ways. The network is a way to learn from the gold standard of people with training and experience."

A VIRTUOUS CIRCLE OF MUTUAL TRANSFORMATION

All over Europe there are people who are tirelessly creating grassroots solutions, keeping our humanity alive. The future of Europe depends on these efforts. In difficult conditions, sometimes against all odds, under-resourced, undervalued, but still designing new approaches, they are making the journey from strangers to neighbours, from the trauma of displacement to living authentically together.

Healthy integration of newcomers and the exchange of religious and cultural knowledge and experience might be of great economic and social benefit for everyone. We empower accomplished practitioners through an interreligious and cross sectoral peer-to-peer support network, a community of practice among those working on the front lines of accompaniment of people on the move, and social cohesion.

We amplify Individual resilience and create collective impact.



AWON PRACTITIONER

FELIX UNOGWU

**HEAD AT REDi SCHOOL OF DIGITAL INTEGRATION
MALMÖ, SWEDEN**

“When I came to this country, I was in a refugee camp, with no access to education and long hours of being in the camp, feeling scared and unwanted. A cloud of fear, nobody there stretching out their hands. When I see these people [joining the ReDi School], it is like stretching out my hand to myself, many years ago, saying: You know, there is a way...”



THREE PILLARS OF A WORLD OF NEIGHBOURS

A COMMUNITY OF PRACTICE

AWoN is a peer-to-peer support network, that meet in small groups. This results in lasting bonds, new collaborations and initiatives and mutual care. The network organises public online learning and exchange sessions, drawing from the expertise of our practitioners and researchers. We engage and link up with other religious and professional networks. Once a year we gather in person to learn, recharge, socialize and move forward.

A MODEL OF MUTUAL SUPPORT FOR EUROPE

A SEAT AT THE TABLE

AWoN facilitates meetings between policy experts, civil society actors, political and religious leaders, people on the move and grassroots practitioners. More than 7 million displaced people (UNCHR, numbers by end of 2021) are hosted in European countries. Decisions impacting their lives should be made with them.

60+
PRACTITIONERS

17+
COUNTRIES

100K+
PEOPLE SUPPORT

A NEW INTERFAITH, CROSS-SECTORAL APPROACH

Recent research shows the important role of interreligious cooperation in accompanying people on the move. This challenges faith communities in Europe to step up and speak up. It challenges outdated perceptions of religion in society and encourages faith communities to rethink their role. A World of Neighbours brings together a unique set up of practitioners, researchers and faith leaders providing:

- Co-production of cultural and religious literacy between people on the move, practitioners, professionals, politicians and researchers
- Co-operation between Jewish, Christian and Muslim aid organisations
- Collaboration at local community level among diverse stakeholders for sustainable integration of newcomers.



AWON PRACTITIONER

NEJSRA KADIĆ MEŠKIĆ

**DIRECTOR CENTRE FOR CULTURAL DIALOGUE
ZAGREB, CROATIA**

"If you go to sleep with full stomach, ask yourself if your neighbor goes to bed with a full stomach." No matter skin colour, faith or status. That's what I learn from the Koran. I am a Bosniak, born in Sarajevo, did my studies in management and finance but found my purpose in the non-profit sector. To do what I love most: create intercultural meaningful connections.

SUPPORT THE FEW, IMPACT THE MANY.

**EMPOWER PRACTITIONERS IN EUROPE WORKING ON THE FRONT LINES
WITH AND FOR PEOPLE ON THE MOVE.**

It's of vital importance to ensure the change-making impact of our practitioners continues and grows. This is indispensable for Europe. To expand from a small staff and large volunteer network, AWoN needs funding to cover a variety of costs, like staff, joint actions, events, travel expenses, learning materials, online platforms and administration.

AWON ONWARDS →

2023

Basic operation
for 60 practitioners
and communities

2024

Expand network
to 90 practitioners
and communities

2025

Grow into regional
coalitions and models of
working across Europe

SUPPORT US

**DONATE HERE FOR A MORE
WELCOMING EUROPE** →



Want to learn more about how you can support AWoN?

Write to us: contact@aworldofneighbours.org

www.aworldofneighbours.org